

# Monolithic crystal filter

## MQF10.7-0760/05 (preliminary specification)



### Application

- 10 pol filter
- i.f.- filter
- use in mobile and stationary transceivers

Limiting values		Unit	Value
Nominal frequency	$f_0$	MHz	10.7
Insertion loss		dB	< 4.0
Pass band at 6.0dB		kHz	$\pm > 3.8$
Ripple in pass band	$f_0 \pm 2.5$ kHz	dB	< 2.0
Stop band attenuation	$f_0 \pm 6.8$ kHz	dB	> 60
	$f_0 \pm 8$ kHz	dB	> 80
Alternate attenuation	$f_c \pm 0.2...5$ MHz	dB	> 90

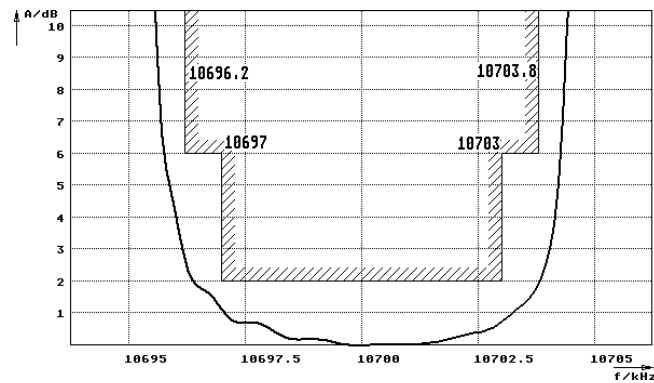
Terminating impedance Z			
R1  C1		Ohm/pF	910    25
R2  C2		Ohm/pF	910    25

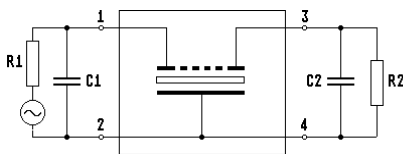
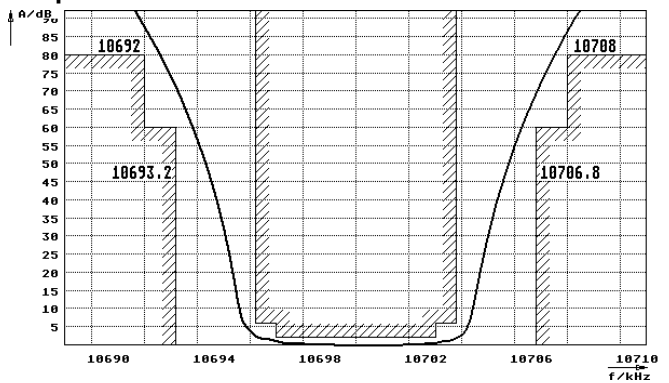
Operating temp. range		°C	-20... +60
Storage temp. range		°C	-45... +85
Environment conditions			according to CF001

### Characteristics MQF10.7-0760/05

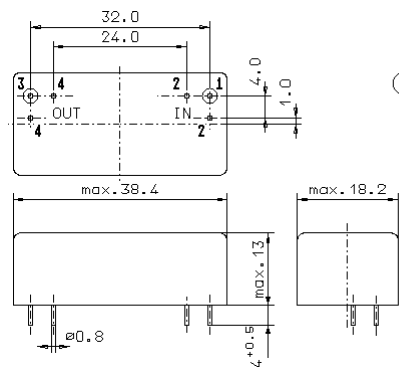
#### Pass band



#### Stop band



- Pin connections:
- 1 Input
  - 2 Ground-Input
  - 3 Output
  - 4 Ground-Output



GM17.2